

# UPVC PIPES & FITTINGS

ASTM D-1785 & ASTM D-2467



Item Code	Size (inch)	Size (mm)	Rate mtr	Rate 3m	Pcs/ Bundle
<b>SH 40</b>					
2134	½"	15	79.00	237.00	50
2136	¾"	20	105.00	315.00	40
2138	1"	25	157.00	471.00	25
2140	1¼"	32	210.00	630.00	20
2142	1½"	40	260.00	780.00	20
2144	2"	50	358.00	1074.00	10
4360	2½"	65	561.00	1683.00	10
3291	3"	80	726.00	2178.00	5
4368	4"	100	1031.00	3093.00	4
4991	6"	150	1808.00	5424.00	1



Item Code	Size (inch)	Size (mm)	Rate mtr	Rate 6m	Pcs/ Bundle
<b>SH 40</b>					
2135	½"	15	79.00	474.00	25
2137	¾"	20	105.00	630.00	20
2139	1"	25	157.00	942.00	10
2141	1¼"	32	210.00	1260.00	10
2143	1½"	40	260.00	1560.00	10
2145	2"	50	358.00	2148.00	5
4392	2½"	65	561.00	3366.00	5
4453	3"	80	726.00	4356.00	5
4465	4"	100	1031.00	6186.00	2
4991	6"	150	1808.00	10848.00	1



Item Code	Size (inch)	Size (mm)	Rate mtr	Rate 3m	Pcs/ Bundle
<b>SH 80</b>					
2146	½"	15	104.00	312.00	50
2148	¾"	20	140.00	420.00	40
2150	1"	25	212.00	636.00	25
2152	1¼"	32	281.00	843.00	20
2154	1½"	40	346.00	1038.00	20
2156	2"	50	473.00	1419.00	10
4452	2½"	65	719.00	2157.00	10
4432	3"	80	971.00	2913.00	5
4095	4"	100	1421.00	4263.00	4
11814	6"	150	1800.00	5424.00	1



Item Code	Size (inch)	Size (mm)	Rate mtr	Rate 6m	Pcs/ Bundle
<b>SH 80</b>					
2147	½"	15	104.00	624.00	25
2149	¾"	20	140.00	840.00	20
2151	1"	25	212.00	1272.00	10
2153	1¼"	32	281.00	1686.00	10
2155	1½"	40	346.00	2076.00	10
2157	2"	50	473.00	2838.00	5
4581	3"	80	971.00	5826.00	5
9566	4"	100	1421.00	8526.00	1

## THREADED PIPES



Item Code	Size (inch)	Size (mm)	Rate mtr	Rate 6m	Pcs/ Bundle
<b>SH 40</b>					
5459	½"	15	83.00	498.00	25
5460	¾"	20	110.00	660.00	20
5461	1"	25	164.00	984.00	10



Item Code	Size (inch)	Size (mm)	Rate mtr	Rate 6m	Pcs/ Bundle
<b>SH 80</b>					
5742	½"	15	110.00	660.00	25
5743	¾"	20	147.00	882.00	20
5744	1"	25	222.00	1332.00	10

### Terms & Conditions

- Above prices are ex-works • GST as applicable • Prices, discounts & terms and conditions are subject to change without any prior notice
- Price prevailing at the time of dispatch will be applicable • Please refer to our technical catalogue before placing order for any technical query
- All disputes are subject to Kolkata court jurisdiction only



# UPVC PIPES & FITTINGS



Item Code	(inch)	(mm)	Qty/ bag	Qty/ box	Rate/ pc
<b>Elbow 45</b>					
2886	½"	15	20	300	17.00
2887	¾"	20	10	160	26.00
2888	1"	25	10	100	38.00
2889	1¼"	32	10	70	60.00
2890	1½"	40	5	40	78.00
2891	2"	50	3	30	120.0
4297	2½"	65	1	30	270.00
4298	3"	80	1	20	390.00
4299	4"	100	1	10	653.00
4300	5"	125	1	8	1103.00
4301	6"	150	1	6	1800.00



Item Code	(inch)	(mm)	Qty/ bag	Qty/ box	Rate/ pc
<b>Elbow 90</b>					
3345	½"	15	20	400	18.00
2631	¾"	20	20	300	26.00
2632	1"	25	20	200	43.00
3346	1¼"	32	10	100	65.00
2634	1½"	40	10	80	89.00
2892	2"	50	5	20	135.00
4292	2½"	65	1	36	368.00
4293	3"	80	1	15	495.00
4294	4"	100	1	12	870.00
4295	5"	125	1	8	1455.00
4296	6"	150	1	4	2385.00



Item Code	(inch)	(mm)	Qty/ bag	Qty/ box	Rate/ pc
<b>Brass Elbow 90</b>					
3924	½"	15	10	100	138.00
2946	¾"	20	11	100	188.00



Item Code	(inch)	(mm)	Qty/ bag	Qty/ box	Rate/ pc
<b>Elbow 90 Threaded</b>					
2928	½"	15	40	200	27.00
2929	¾"	20	10	120	45.00
2930	1"	25	10	100	63.00
2931	1¼"	32	10	100	98.00
2932	1½"	40	10	50	135.00
2933	2"	50	5	25	210.00



Item Code	(inch)	(mm)	Qty/ bag	Qty/ box	Rate/ pc
<b>Elbow 90 Reducer</b>					
3817	¾"x½"	20x15	50	200	28.00
3818	1"x½"	25x15	25	200	41.00
3819	1"x¾"	25x20	25	200	43.00



Item Code	(inch)	(mm)	Qty/ bag	Qty/ box	Rate/ pc
<b>Brass Reducer Elbow 90</b>					
11940	¾"x½"	20x15	15	100	120.00



Item Code	(inch)	(mm)	Qty/ bag	Qty/ box	Rate/ pc
<b>Brass Elbow 90 with SS Ring</b>					
3197	½"	15	10	100	165.00
3199	¾"	20	10	100	188.00
4045	1"	25	10	50	306.00



Item Code	(inch)	(mm)	Qty/ bag	Qty/ box	Rate/ pc
<b>Brass Reducer Elbow 90 with SS Ring</b>					
3198	¾"x½"	20x15	15	150	180.00
4043	1"x½"	25x15	10	150	240.00
4044	1"x¾"	25x20	20	100	245.00

## Terms & Conditions

- Above prices are ex-works • GST as applicable • Prices, discounts & terms and conditions are subject to change without any prior notice
- Price prevailing at the time of dispatch will be applicable • Please refer to our technical catalogue before placing order for any technical query
- All disputes are subject to Kolkata court jurisdiction only

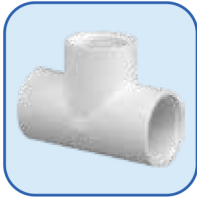




Item Code	(inch)	(mm)	Qty/ bag	Qty/ box	Rate/ pc
<b>Cross Tee</b>					
2950	½"	15	10	200	37.00
2951	¾"	20	10	150	60.00
2952	1"	25	10	100	84.00



Item Code	(inch)	(mm)	Qty/ bag	Qty/ box	Rate/ pc
<b>Tee</b>					
3211	½"	15	30	300	27.00
3106	¾"	20	20	200	40.00
3113	1"	25	10	100	59.00
2636	1¼"	32	10	100	90.00
2637	1½"	40	5	50	116.00
2893	2"	50	3	15	176.00
4302	2½"	65	1	22	428.00
4303	3"	80	1	18	623.00
4304	4"	100	1	10	1155.00
4305	5"	125	1	4	1883.00
4306	6"	150	1	4	2955.00



Item Code	(inch)	(mm)	Qty/ bag	Qty/ box	Rate/ pc
<b>Tee Threaded</b>					
2934	½"	15	20	160	39.00
2935	¾"	20	10	100	56.00
3219	1"	25	5	50	89.00



Item Code	(inch)	(mm)	Qty/ bag	Qty/ box	Rate/ pc
<b>Brass Tee</b>					
3925	½"x½"	15x15	10	100	156.00
2948	¾"x¾"x½"	20x20x15	-	-	183.00



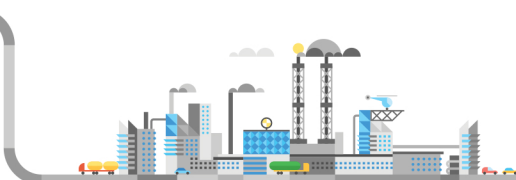
Item Code	(inch)	(mm)	Qty/ bag	Qty/ box	Rate/ pc
<b>Reducer Tee</b>					
3214	½"x½"x¾"	15x15x20	25	150	38.00
2638	¾"x¾"x½"	20x20x15	20	200	37.00
2697	1"x1"x½"	25x25x15	10	150	56.00
3355	1"x1"x¾"	25x25x20	10	150	58.00
2918	1¼"x1¼"x½"	32x32x15	5	50	85.00
3215	1¼"x1¼"x¾"	32x32x20	5	50	98.00
2917	1¼"x1¼"x1"	32x32x25	5	40	102.00
3356	1½"x1½"x½"	40x40x15	4	48	105.00
3357	1½"x1½"x¾"	40x40x20	4	40	107.00
3216	1½"x1½"x1"	40x40x25	4	40	128.00
2922	1½"x1½"x1¼"	40x40x32	4	24	144.00
2923	2"x2"x½"	50x50x15	3	30	158.00
2924	2"x2"x¾"	50x50x20	3	30	162.00
3217	2"x2"x1"	50x50x25	2	20	166.00
3218	2"x2"x1¼"	50x50x32	2	18	210.00
2927	2"x2"x1½"	50x50x40	5	18	210.00
4311	2½"x1½"	65x40	1	28	345.00
4312	2½"x2"	65x50	1	21	360.00
4313	3"x2"	80x50	1	20	480.00
4314	3"x2½"	80x65	1	20	630.00
4315	4"x2½"	100x65	1	12	810.00
4316	4"x3"	100x80	1	10	1095.00
4317	6"x3"	150x80	1	4	1950.00
4318	6"x4"	150x100	1	4	2220.00



Item Code	(inch)	(mm)	Qty/ bag	Qty/ box	Rate/ pc
<b>Brass Tee with SS Ring</b>					
2947	½"x½"	15x15	10	100	156.00
3213	¾"x¾"	20x20	8	80	222.00



Item Code	(inch)	(mm)	Qty/ bag	Qty/ box	Rate/ pc
<b>Brass Reducer Tee with SS Ring</b>					
3212	¾"x¾"x½"	20x20x15	10	50	212.00
4046	1"x1"x½"	25x25x15	10	50	290.00
4047	1"x1"x¾"	25x25x20	10	50	338.00



# UPVC PIPES & FITTINGS



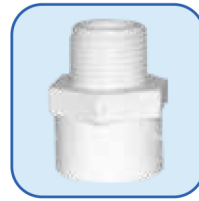
Item Code	(inch)	(mm)	Qty/ bag	Qty/ box	Rate/ pc
<b>Coupler</b>					
3350	½"	15	50	700	16.00
3114	¾"	20	10	450	23.00
3351	1"	25	20	300	27.00
3193	1¼"	32	10	160	57.00
3352	1½"	40	10	120	64.00
2897	2"	50	4	40	140.00
4287	2½"	65	1	54	203.00
4288	3"	80	1	36	278.00
4289	4"	100	1	14	473.00
4290	5"	125	1	12	728.00
4291	6"	150	1	6	1193.00



Item Code	(inch)	(mm)	Qty/ bag	Qty/ box	Rate/ pc
<b>Male Thread Adapter (MTA)</b>					
3716	½"	15	100	800	15.00
3207	¾"	20	60	600	20.00
3717	1"	25	20	300	26.00
3208	1¼"	32	20	220	43.00
3111	1½"	40	15	150	55.00
2895	2"	50	6	60	84.00
4427	2½"	65	1	60	188.00
4428	3"	80	1	48	270.00
4429	4"	100	1	18	480.00



Item Code	(inch)	(mm)	Qty/ bag	Qty/ box	Rate/ pc
<b>Reducer Coupler</b>					
2700	¾"x½"	20x15	20	400	19.00
3194	1"x½"	25x15	20	400	36.00
2643	1"x¾"	25x20	20	320	29.00
2898	1¼"x½"	32x15	20	100	45.00
2899	1¼"x¾"	32x20	10	200	48.00
2900	1¼"x1"	32x25	10	100	56.00
2901	1½"x½"	40x15	20	100	56.00
2902	1½"x¾"	40x20	20	100	60.00
2903	1½"x1"	40x25	4	100	72.00
2904	1½"x1¼"	40x32	5	50	81.00
2905	2"x½"	50x15	5	50	87.00
2906	2"x¾"	50x20	5	50	92.00
3195	2"x1"	50x25	5	50	99.00
3196	2"x1¼"	50x32	5	50	107.00
2909	2"x1½"	50x40	5	50	117.00
4319	2½"x½"	65x40	1	60	176.00
4320	2½"x2"	65x50	1	60	188.00
4321	3"x2"	80x50	1	48	252.00
4322	3"x2½"	80x65	1	36	294.00
4323	4"x2½"	100x65	1	21	435.00
4345	4"x3"	100x80	1	18	465.00
4347	6"x4"	150x100	1	9	1148.00



Item Code	(inch)	(mm)	Qty/ bag	Qty/ box	Rate/ pc
<b>Reducer Male Thread Adapter (MTA)</b>					
4013	¾"x½"	20x15	10	100	16.00



Item Code	(inch)	(mm)	Qty/ bag	Qty/ box	Rate/ pc
<b>Brass Male Thread Adapter (MTA)</b>					
3209	½"	15	5	200	176.00
2938	¾"	20	5	150	188.00
3210	1"	25	5	100	300.00
3830	1¼"	32	2	50	450.00
3831	1½"	40	2	50	480.00
3832	2"	50	1	50	825.00



Item Code	(inch)	(mm)	Qty/ bag	Qty/ box	Rate/ pc
<b>Brass Reducer Male Thread Adapter (MTA)</b>					
4038	¾"x½"	20x15	10	100	181.00



Item Code	(inch)	(mm)	Qty/ bag	Qty/ box	Rate/ pc
<b>Union</b>					
2967	½"	15	20	200	40.00
2968	¾"	20	10	250	56.00
2969	1"	25	10	100	68.00
2970	1¼"	32	5	50	130.00
2971	1½"	40	5	40	248.00
2972	2"	50	4	20	420.00



Item Code	(inch)	(mm)	Qty/ bag	Qty/ box	Rate/ pc
<b>Brass Female Thread Adapter (FTA) with ss Ring</b>					
2940	½"	15	10	100	143.00
2941	¾"	20	10	100	197.00
2942	1"	25	10	100	369.00
4039	1¼"	32	5	50	527.00
4040	1½"	40	4	40	783.00
4041	2"	50	3	30	1110.00





Item Code	(inch)	(mm)	Qty/ bag	Qty/ box	Rate/ pc
<b>Female Thread Adapter (FTA)</b>					
3714	½"	15	50	650	13.00
3203	¾"	20	40	400	25.00
3715	1"	25	24	240	31.00
3204	1¼"	32	15	150	48.00
3110	1½"	40	10	100	65.00
2894	2"	50	7	50	95.00
4424	2½"	65	1	45	210.00
4425	3"	80	1	36	293.00
4426	4"	100	1	12	503.00



Item Code	(inch)	(mm)	Qty/ bag	Qty/ box	Rate/ pc
<b>Brass Female Thread Adapter (FTA)</b>					
3923	½"	15	10	200	124.00
3574	1"	25	-	-	321.00



Item Code	(inch)	(mm)	Qty/ bag	Qty/ box	Rate/ pc
<b>Brass Reducer Female Thread Adapter (FTA) with SS Ring</b>					
3205	¾"x½"	20x15	10	120	135.0
4042	1"x½"	25x15	10	100	171.00



Item Code	(inch)	(mm)	Qty/ bag	Qty/ box	Rate/ pc
<b>Brass Reducer Female Thread Adapter (FTA)</b>					
2943	¾"x½"	20x15	10	100	127.00



Item Code	(inch)	(mm)	Qty/ bag	Qty/ box	Rate/ pc
<b>Tank Nipple</b>					
3824	½"	15	22	220	33.00
3825	¾"	20	14	140	52.00
3826	1"	25	8	80	66.00
3827	1¼"	32	5	50	120.00
3828	1½"	40	4	40	135.00
3829	2"	50	3	27	225.00



Item Code	(inch)	(mm)	Qty/ bag	Qty/ box	Rate/ pc
<b>Tank Nipple with One Side Fitment</b>					
4027	¾"	20	25	150	55.00
4028	1"	25	20	100	76.00



Item Code	(inch)	(mm)	Qty/ bag	Qty/ box	Rate/ pc
<b>Tank Nipple with One Side Socket</b>					
5238	¾"	20	14	140	75.00
5240	1"	25	9	90	128.00
5242	1¼"	32	6	60	177.00



Item Code	(inch)	(mm)	Qty/ bag	Qty/ box	Rate/ pc
<b>Tank Nipple with One Side Pipe Fitment</b>					
8275	½"	15	4	100	56.00
8276	¾"	20	5	100	68.00
8277	1"	25	6	60	86.00
9774	1¼"	32	5	50	224.00



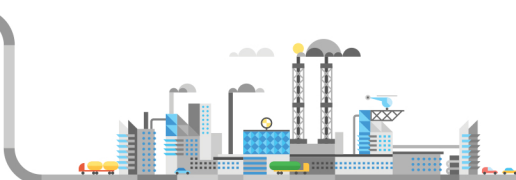
Item Code	(inch)	(mm)	Qty/ bag	Qty/ box	Rate/ pc
<b>Compact Ball Valve</b>					
2953	½"	15	15	150	113.00
2955	¾"	20	10	80	165.00
2956	1"	25	10	80	286.00
2957	1¼"	32	5	50	420.00
2958	1½"	40	5	50	600.00
2959	2"	50	2	24	1200.00



Item Code	(inch)	(mm)	Qty/ bag	Qty/ box	Rate/ pc
<b>Long Handle Ball Valve</b>					
9174	½"	15	15	150	74.00
9175	¾"	20	10	100	151.00
9176	1"	25	10	80	300.00
9107	1¼"	32	-	50	505.00
8366	1½"	40	5	50	698.00
9183	2"	50	2	24	1400.00
11791	2½"	65	1	10	1750.00



Item Code	(inch)	(mm)	Qty/ bag	Qty/ box	Rate/ pc
<b>Single Union Ball Valve</b>					
3358	½"	15	6	168	165.00
2961	¾"	20	5	100	270.00
2962	1"	25	5	80	390.00
2963	1¼"	32	2	30	570.00
2964	1½"	40	1	32	870.00
2965	2"	50	1	12	1290.00



# UPVC PIPES & FITTINGS



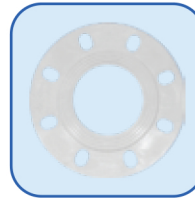
Item Code	(inch)	(mm)	Qty/ bag	Qty/ box	Rate/ pc
<b>Union Long Handle Ball Valve</b>					
9171	½"	15	15	150	147.00
9172	¾"	20	10	100	236.00
9173	1"	25	10	80	349.00



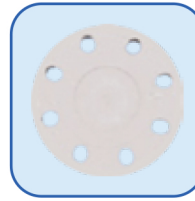
Item Code	(inch)	(mm)	Qty/ bag	Qty/ box	Rate/ pc
<b>Welding Clamp</b>					
3220	½"	15	20	200	30.00
2974	¾"	20	18	180	50.00
3221	1"	25	12	120	53.00
2976	1¼"	32	10	100	56.00
2977	1½"	40	5	150	57.00
3222	2"	50	5	100	59.00



Item Code	(inch)	(mm)	Qty/ bag	Qty/ box	Rate/ pc
<b>End Cap</b>					
2714	½"	15	140	1400	9.00
3347	¾"	20	90	900	14.00
3348	1"	25	50	500	23.00
3349	1¼"	32	30	330	34.00
3202	1½"	40	20	240	53.00
2896	2"	50	10	70	75.00
4420	2½"	65	1	75	165.00
4421	3"	80	1	52	225.00
4422	4"	100	1	28	375.00
4423	6"	150	1	12	1013.00



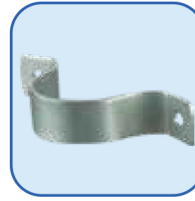
Item Code	(inch)	(mm)	Qty/ bag	Qty/ box	Rate/ pc
<b>Flanges End Cap Open</b>					
4030	1"	25	6	72	122.00
4031	1¼"	32	4	56	150.00
4032	1½"	40	4	40	210.00
4033	2"	50	2	30	300.00



Item Code	(inch)	(mm)	Qty/ bag	Qty/ box	Rate/ pc
<b>Flanges End Cap Closed</b>					
4034	1"	25	6	66	150.00
4035	1¼"	32	4	44	178.00
4036	1½"	40	2	32	220.00
4037	2"	50	2	30	315.00



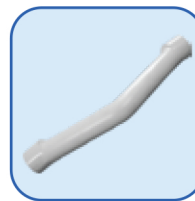
Item Code	(inch)	(mm)	Qty/ bag	Qty/ box	Rate/ pc
<b>Plastic Clamp</b>					
4021	½"	15	100	1000	6.00
4022	¾"	20	100	800	8.00
4023	1"	25	60	600	10.00
4024	1¼"	32	50	500	16.00
4025	1½"	40	30	300	23.00
4026	2"	50	25	200	27.00



Item Code	(inch)	(mm)	Qty/ bag	Qty/ box	Rate/ pc
<b>SS Clamp</b>					
3965	½"	15	100	2000	17.00
3966	¾"	20	100	1500	17.00
3967	1"	25	100	1000	20.00
3968	1¼"	32	100	1000	22.00
3969	1½"	40	100	500	24.00
3970	2"	50	100	500	29.00



Item Code	(inch)	(mm)	Qty/ bag	Qty/ box	Rate/ pc
<b>Powder Coated Metal Clamp</b>					
4195	½"	15	100	2000	16.00
4196	¾"	20	100	1500	17.00
4197	1"	25	100	1000	17.00
4198	1¼"	32	100	1000	22.00
4199	1½"	40	100	500	22.00
4200	2"	50	100	500	25.00



Item Code	(inch)	(mm)	Qty/ bag	Qty/ box	Rate/ pc
<b>Step Over Bend with Socket</b>					
4017	½"	15	10	100	60.00
4018	¾"	20	10	80	92.00
4020	1"	25	5	50	172.00



# UPVC PIPES & FITTINGS



Item Code	(inch)	(mm)	Qty/ bag	Qty/ box	Rate/ pc
<b>Short Bend</b>					
3958	½"	15	20	200	43.00
3959	¾"	20	12	120	60.00
3960	1"	25	10	60	100.00
3961	1¼"	32	3	30	163.00
3963	1½"	40	2	24	206.00
3964	2"	50	1	10	316.00



Item Code	(inch)	(mm)	Qty/ bag	Qty/ box	Rate/ pc
<b>Faucet</b>					
2966	½"	15	6	72	90.00



Item Code	(inch)	(mm)	Qty/ bag	Qty/ box	Rate/ pc
<b>Reducer Bushing</b>					
2718	¾"x½"	20x15	20	500	9.00
2719	1"x½"	25x15	60	300	17.00
3188	1"x¾"	25x20	60	300	12.00
4014	1¼"x½"	32x15	25	250	37.00
4015	1¼"x¾"	32x20	25	250	28.00
3353	1¼"x1"	32x25	20	200	28.00
2911	1½"x½"	40x15	10	100	39.00
3820	1½"x¾"	40x20	10	500	50.00
2912	1½"x1"	40x25	10	150	39.00
3354	1½"x1¼"	40x32	10	150	26.00
3821	2"x½"	50x15	10	150	84.00
3822	2"x¾"	50x20	10	150	83.00
3823	2"x1"	50x25	10	150	86.00
4016	2"x1¼"	50x32	10	100	78.00
3190	2"x1½"	50x40	10	100	60.00
4346	2½"x2"	65x50	1	120	90.00
4348	3"x1½"	80x40	1	60	188.00
4349	3"x2"	80x50	1	60	188.00
4350	3"x2½"	80x65	1	60	143.00
4351	4"x2"	100x50	1	32	323.00
4352	4"x3"	100x80	1	32	293.00
4353	5"x4"	125x100	1	24	503.00
4354	6"x3"	150x80	1	18	833.00
4418	6"x4"	150x100	1	18	900.00
4419	6"x5"	150x125	1	18	668.00



Item Code	Size (ml)	No of pcs in a bag	No of bags in box	Rate/ pc
<b>Solvent Cement</b>				IS : 14182 : 1994
5751	59	1	36	140.00
4756	118	1	24	220.00
4757	237	1	24	320.00
4758	473	1	12	480.00
4759	946	1	6	820.00

#### Terms & Conditions

- Above prices are ex-works • GST as applicable • Prices, discounts & terms and conditions are subject to change without any prior notice • Price prevailing at the time of dispatch will be applicable • Please refer to our technical catalogue before placing order for any technical query • All disputes are subject to Kolkata court jurisdiction only

