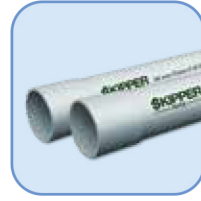


# AGRICULTURE PIPES & FITTINGS

IS 4985 / 2000



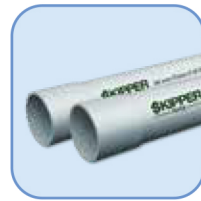
Item Code	Outer (Diameter) (inch)	Outer (Diameter) (mm)	2.5 kg/cm <sup>2</sup> Class-1 (2.5 kgs/cm <sup>2</sup> )	Wall thickness(mm)	Rate mtr/(₹)
3 mtrs					
<b>Selffit/Pushfit Rigid PVC Pipes (Bell End)</b>					
5312	4"	110	2.67		274.00
10946	5"	140	2.67		430.00
5311	6"	160	5.57		571.00
2192	10"	250	13.55		1388.00
1220	12"	315	21.87		2243.00
1369	8"	200	-		-



Item Code	Outer (Diameter) (inch)	Outer (Diameter) (mm)	4.0 kg/cm <sup>2</sup> Class-2 (4.0 kgs/cm <sup>2</sup> )	Wall thickness(mm)	Rate mtr/(₹)
3 mtrs					
<b>Selffit/Pushfit Rigid PVC Pipes (Bell End)</b>					
2510	2"	63	1.41		145.00
1075	4"	110	4.04		415.00
2722	6"	160	8.77		888.00
1483	7"	180	11.22		1139.00
1462	8"	200	13.63		1382.00
3126	10"	250	21.16		2152.00
2325	12"	315	33.96		3479.00
3677	9"	225	17.01		1779.00
2802	11"	280	25.40		2739.00



Item Code	Outer (Diameter) (inch)	Outer (Diameter) (mm)	6.0 kg/cm <sup>2</sup> Class-3 (6.0 kgs/cm <sup>2</sup> )	Wall thickness(mm)	Rate mtr/(₹)
3 mtrs					
<b>Selffit/Pushfit Rigid PVC Pipes (Bell End)</b>					
4854	1¼"	40	0.83		82.00
3284	1½"	50	1.25		122.00
1045	2"	63	2.04		199.00
1187	2½"	75	4.09		276.00
1026	3"	90	5.94		397.00
1025	4"	110	9.78		574.00
0356	5"	140	4.8		947.00
11360(0.5)	5"	140	4.8		1050.00
3370	6"	160	12.61		1272.00
0364	7"	180	16.11		1633.00
0368	8"	200	19.97		2026.00
0372	9"	225	25.13		2559.00
1318	10"	250	31.27		3187.00
0376	12"	315	49.94		5120.00
2540	11"	280	37.80		4018.00



Item Code	Outer (Diameter) (inch)	Outer (Diameter) (mm)	8.0 kg/cm <sup>2</sup> Class-4 (8.0 kgs/cm <sup>2</sup> )	Wall thickness(mm)	Rate mtr/(₹)
3 mtrs					
<b>Selffit/Pushfit Rigid PVC Pipes (Bell End)</b>					
4068	1"	25	0.44		47.00
2791	1½"	50	1.67		168.00
3128	5"	140	12.74		1284.00
3119	6"	160	16.63		1678.00
3121	7"	180	20.84		2103.00
3732	8"	200	25.83		2616.00
4853	1¼"	32	-		-
3167	2½"	75	3.64		369.00
2884	9"	225	31.75		3315.00
2795	12"	315	62.50		6595.00



Item Code	Outer (Diameter) (inch)	Outer (Diameter) (mm)	10.0 kg/cm <sup>2</sup> Class-5 (10.0 kgs/cm <sup>2</sup> )	Wall thickness(mm)	Rate mtr/(₹)
3 mtrs					
<b>Selffit/Pushfit Rigid PVC Pipes (Bell End)</b>					
9691	1"	25	0.51		52.00
4580	1¼"	32	0.83		83.00
4188	1½"	40	1.26		128.00
3690	7"	180	25.49		2573.00
3691	8"	200	30.95		3191.00
2797	12"	315	78.90		8054.00
1454	2"	50	1.97		200.00



Item Code	Outer (Diameter) (inch)	Outer (Diameter) (mm)	6.0 kg/cm <sup>2</sup> Class-3 (6.0 kgs/cm <sup>2</sup> )	Wall thickness(mm)	Rate mtr/(₹)
3 mtrs					
<b>Grey Rigid (P.S)</b>					
1402	4"	110	5.63		685.00
1429	5"	140	9.26		1086.00
1731	6"	160	11.91		1390.00
1431	8"	200	18.80		2218.00



Item Code	Outer (Diameter) (inch)	Outer (Diameter) (mm)	2.5 kg/cm <sup>2</sup> Class-1 (2.5 kgs/cm <sup>2</sup> )	Rate
			Wall thickness(mm)	mtr/(₹)
6 mtrs				



Selfit/Pushfit Rigid PVC Pipes (Bell End)				
3320	3"	90	1.3	186.00
3295	4"	110	1.6	274.00
5283	4½"	125	1.8	348.00
3298	5"	140	2.0	430.00
3301	6"	160	2.3	571.00
3303	7"	180	2.6	720.00
3304	8"	200	2.9	888.00
3293	9"	225	3.3	1147.00
3307	10"	250	3.6	1388.00
3294	11"	280	4.1	1782.00
3310	12"	315	4.6	2243.00

Item Code	Outer (Diameter) (inch)	Outer (Diameter) (mm)	4.0 kg/cm <sup>2</sup> Class-2 (4.0 kgs/cm <sup>2</sup> )	Rate
			Wall thickness(mm)	mtr/(₹)
6 mtrs				



Selfit/Pushfit Rigid PVC Pipes (Bell End)				
3314	2"	63	1.5	145.00
3316	2½"	75	1.8	204.00
3889	3"	90	2.1	289.00
3296	4"	110	2.5	415.00
3892	5"	140	3.2	678.00
3887	6"	160	3.7	888.00
3281	7"	180	4.2	1139.00
3306	8"	200	4.6	1382.00
3392	9"	225	5.2	1779.00
3308	10"	250	5.7	2152.00
3396	11"	280	6.4	2739.00
3311	12"	315	7.2	3479

Item Code	Outer (Diameter) (inch)	Outer (Diameter) (mm)	6.0 kg/cm <sup>2</sup> Class-3 (6.0 kgs/cm <sup>2</sup> )	Rate
			Wall thickness(mm)	mtr/(₹)
6 mtrs				



Selfit/Pushfit Rigid PVC Pipes (Bell End)				
3283	1¼"	40	1.4	82.00
3312	1½"	50	1.7	122.00
3315	2"	63	2.2	199.00
3317	2½"	75	2.6	276.00
3319	3"	90	3.1	397.00
3297	4"	110	3.7	574.00
0795	4"	110	3.7	574.00
3403	4½"	125	4.3	790.00
3888	5"	140	4.8	985.00
3893	6"	160	5.4	1272.00
3894	7"	180	6.1	1633.00
3305	8"	200	6.8	2026.00
3408	9"	225	7.6	2559.00
3309	10"	250	8.5	3187.00
3410	11"	280	9.5	4018.00
3411	12"	315	10.7	5120.00

Item Code	Outer (Diameter) (inch)	Outer (Diameter) (mm)	8.0 kg/cm <sup>2</sup> Class-4 (8.0 kgs/cm <sup>2</sup> )	Rate
			Wall thickness(mm)	mtr/(₹)
6 mtrs				



Selfit/Pushfit Rigid PVC Pipes (Bell End)				
4057	1"	25	-	47.00
0872	1½"	50	2.3	168.00
4370	2"	63	2.8	255.00
5534	3"	90	4.0	517.00
3459	4"	110	4.9	774.00
3332	5"	140	6.3	1284.00
3331	6"	160	7.2	1678.00
3329	7"	180	8.0	2103.00
5680	12"	315	14.0	6595.00

#### Terms & Conditions

• Above prices are ex-works • GST as applicable • Prices, discounts & terms and conditions are subject to change without any prior notice • Price prevailing at the time of dispatch will be applicable • Please refer to our technical catalogue before placing order for any technical query • All disputes are subject to Kolkata court jurisdiction only

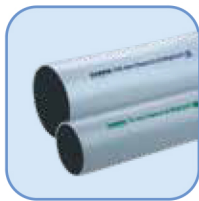




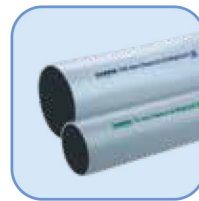
Item Code	Outer (Diameter) (inch)	Outer (Diameter) (mm)	10.0 kg/cm <sup>2</sup> Class-5 (10.0 kgs/cm <sup>2</sup> )	Rate mtr/(₹)
6 mtrs				Wall thickness(mm)
Selffit/Pushfit Rigid PVC Pipes (Bell End)				
4066	¼"	20	-	34.00
4069	1"	25	-	52.00
4072	1¼"	32	-	83.00
4189	1½"	40	-	128.00
5343	2"	63	3.5	313.00
4191	2½"	75	4.2	448.00
4192	3"	90	5.0	635.00
3290	4"	110	6.1	1009.00
5886	6"	160	8.8	2033.00
3693	8"	200	11.0	3191.00
10923	9"	225	12.0	4250.00
5885	10"	250	13.8	5050.00
3692	7"	180	9.9	2550.00



Item Code	Outer (Diameter) (inch)	Outer (Diameter) (mm)	4.0 kg/cm <sup>2</sup> Class-2 (4.0 kgs/cm <sup>2</sup> )	Rate/mtr (₹)
6 mtrs				Rate/mtr (₹)
Slotted Grey Rigid (Plain End)				
0348	4"	110	-	415.00
0354	5"	140	-	678.00
0359	6"	160	-	888.00
0362	7"	180	-	1139.00
0366	8"	200	-	1382.00
3889	3"	90	-	289.00



Item Code	Outer (Diameter) (inch)	Outer (Diameter) (mm)	6.0 kg/cm <sup>2</sup> Class-3 (6.0 kgs/cm <sup>2</sup> )	Rate/mtr (₹)
6 mtrs				Rate/mtr (₹)
Slotted Grey Rigid (Plain End)				
0346	3"	90	-	413.00
0349	4"	110	-	597.00
0355	5"	140	-	985.00
0360	6"	160	-	1272.00
0363	7"	180	-	1633.00
0367	8"	200	-	2026.00



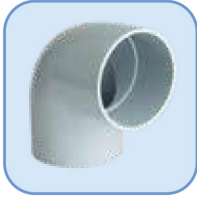
Item Code	Outer (Diameter) (inch)	Outer (Diameter) (mm)	8.0 kg/cm <sup>2</sup> Class-4 (8.0 kgs/cm <sup>2</sup> )	Rate/mtr (₹)
6 mtrs				Rate/mtr (₹)
Slotted Grey Rigid (Plain End)				
3127	5"	140	-	1284.00
3120	7"	180	-	2103.00

### Terms & Conditions

- Above prices are ex-works • GST as applicable • Prices, discounts & terms and conditions are subject to change without any prior notice • Price prevailing at the time of dispatch will be applicable • Please refer to our technical catalogue before placing order for any technical query • All disputes are subject to Kolkata court jurisdiction only



Agri Fittings (IS : 7834)	Item Code	Size (inches)	Size (mm)	Qty per Box	Rate/pc. (₹) 4.0kg/cm <sup>2</sup>
------------------------------	-----------	------------------	--------------	----------------	--



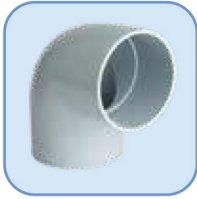
Elbow 90					
1337	2"	63	50	52.00	
1338	2½"	75	30	72.00	
1339	3"	90	38	104.00	
5144	4"	110	20	125.00	

Agri Fittings (IS : 7834)	Item Code	Size (inches)	Size (mm)	Qty per Box	Rate/pc. (₹) 6.0kg/cm <sup>2</sup>
------------------------------	-----------	------------------	--------------	----------------	--



Elbow 90					
1404	2"	63	50	54.00	
1405	2½"	75	30	83.00	
1942	3"	90	38	150.00	
4387	4"	110	20	210.00	
4388	5"	140	12	417.00	
4389	6"	160	7	615.00	

Agri Fittings (IS : 7834)	Item Code	Size (inches)	Size (mm)	Qty per Box	Rate/pc. (₹) 10.0kg/cm <sup>2</sup>
------------------------------	-----------	------------------	--------------	----------------	---



Elbow 90					
4361	1¼"	40	120	26.00	
4362	1½"	50	90	42.00	

Agri Fittings (IS : 7834)	Item Code	Size (inches)	Size (mm)	Qty per Box	Rate/pc. (₹) 4.0kg/cm <sup>2</sup>
------------------------------	-----------	------------------	--------------	----------------	--



Tee 90					
1340	2"	63	24	68.00	
1341	2½"	75	20	94.00	
1342	3"	90	12	145.00	
1343	4"	110	15	218.00	

Agri Fittings (IS : 7834)	Item Code	Size (inches)	Size (mm)	Qty per Box	Rate/pc. (₹) 6.0kg/cm <sup>2</sup>
------------------------------	-----------	------------------	--------------	----------------	--



Tee 90					
1406	2"	63	24	73.00	
1943	2½"	75	20	130.00	
4391	3"	90	12	174.00	
1941	4"	110	15	320.00	
4395	5"	140	8	522.00	
4396	6"	160	5	930.00	

Agri Fittings (IS : 7834)	Item Code	Size (inches)	Size (mm)	Qty per Box	Rate/pc. (₹) 10.0kg/cm <sup>2</sup>
------------------------------	-----------	------------------	--------------	----------------	---



Tee 90					
4366	1¼"	40	122	33.00	
4380	1½"	50	60	60.00	

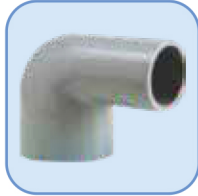
#### Terms & Conditions

- Above prices are ex-works • GST as applicable • Prices, discounts & terms and conditions are subject to change without any prior notice • Price prevailing at the time of dispatch will be applicable • Please refer to our technical catalogue before placing order for any technical query • All disputes are subject to Kolkata court jurisdiction only





Agri Fittings (IS : 7834)	Item Code	Size (inches)	Size (mm)	Qty per Box	Rate/pc. (₹) 6.0kg/cm <sup>2</sup>
---------------------------	-----------	---------------	-----------	-------------	------------------------------------



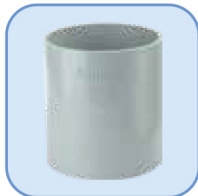
Reducing Elbow					
4414	6"x4"	160x110	7	510.00	
4415	4"x3"	110x90	20	205.00	
4416	4"x2½"	110x75	20	180.00	

Agri Fittings (IS : 7834)	Item Code	Size (inches)	Size (mm)	Qty per Box	Rate/pc. (₹) 6.0kg/cm <sup>2</sup>
---------------------------	-----------	---------------	-----------	-------------	------------------------------------



Reducing Tee					
4408	6"x4"	160x110	6	795.00	
4409	4"x3"	110x90	20	251.00	
4410	4"x2½"	110x75	20	234.00	
4411	4"x2"	110x63	10	228.00	
4412	3"x2½"	90x75	36	161.00	
4413	3"x2"	90x63	34	156.00	

Agri Fittings (IS : 7834)	Item Code	Size (inches)	Size (mm)	Qty per Box	Rate/pc. (₹) 4.0kg/cm <sup>2</sup>
---------------------------	-----------	---------------	-----------	-------------	------------------------------------



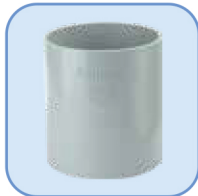
Coupler					
1344	2"	63	100	25.00	
1345	2½"	75	60	38.00	
1346	3"	90	24	58.00	
1347	4"	110	48	91.00	

Agri Fittings (IS : 7834)	Item Code	Size (inches)	Size (mm)	Qty per Box	Rate/pc. (₹) 6.0kg/cm <sup>2</sup>
---------------------------	-----------	---------------	-----------	-------------	------------------------------------



Coupler					
1407	2"	63	100	32.00	
1408	2½"	75	60	44.00	
1409	3"	90	24	70.00	
1850	4"	110	48	148.00	
4399	5"	140	18	233.00	
4400	6"	160	16	267.00	

Agri Fittings (IS : 7834)	Item Code	Size (inches)	Size (mm)	Qty per Box	Rate/pc. (₹) 10.0kg/cm <sup>2</sup>
---------------------------	-----------	---------------	-----------	-------------	-------------------------------------



Coupler					
4363	1½"	40	232	14.00	
4364	1½"	50	160	21.00	

Agri Fittings (IS : 7834)	Item Code	Size (inches)	Size (mm)	Qty per Box	Rate/pc. (₹) 6.0kg/cm <sup>2</sup>
---------------------------	-----------	---------------	-----------	-------------	------------------------------------



Reducer					
4401	6"x4"	160x110	24	266.00	
4402	4"x3"	110x90	24	114.00	
4403	4"x2½"	110x75	24	105.00	
4404	4"x2"	110x63	24	98.00	
4405	3"x2½"	90x75	42	68.00	
4406	3"x2"	90x63	42	68.00	

Item Code	Size (ml)	Rate/pc
-----------	-----------	---------



Solvent Cement		
1077	75	103.00
1078	250	208.00
1079	500	311.00
1080	1000	501.00
1081	5000	2390.00

### Terms & Conditions

- Above prices are ex-works • GST as applicable • Prices, discounts & terms and conditions are subject to change without any prior notice • Price prevailing at the time of dispatch will be applicable • Please refer to our technical catalogue before placing order for any technical query • All disputes are subject to Kolkata court jurisdiction only

