

# COLUMN PIPES



Item Code	Size (inch)	Size (mm)	Super Heavy	
			kg/cm	Rate/pc. (₹) (3mtr)
<b>Column Pipes</b>				
3333	2"	50	35	1683.00
3334	2½"	65	35	2394.00



Item Code	Size (inch)	Size (mm)	Diamond		Item Code	Size (inch)	Size (mm)	Diamond	
			kg/cm	Rate/pc. (₹) (3mtr)				kg/cm	Rate/pc. (₹) (3mtr)
<b>Column Pipes</b>					<b>Column Pipes</b>				
2158	1"	25	33	643.00	2170	1"	25	33	579.00
2164	1¼"	32	36	950.00	2172	1¼"	32	36	878.00
2159	1½"	40	33	1140.00	2171	1½"	40	33	1041.00
2160	2"	50	26	1520.00					
2161	2½"	65	22	1973.00					
2162	3"	80	20	2579.00					
2163	4"	100	18	3656.00					
8364(S)	1¼"	32	36	1204.00					
5571(W/L)	2½"	65	22	1973.00					
5573(W/L)	2"	50	26	1520.00					



Item Code	Size (inch)	Size (mm)	Gold		Item Code	Size (inch)	Size (mm)	Gold	
			kg/cm	Rate/pc. (₹) (3mtr)				kg/cm	Rate/pc. (₹) (3mtr)
<b>Column Pipes</b>					<b>Column Pipes</b>				
2124	1"	25	29	581.00	2177	1"	25	29	518.00
2123	1¼"	32	25	733.00	2179	1¼"	32	25	661.00
2125	1½"	40	23	869.00	2178	1½"	40	23	769.00
2127	2"	50	19	1167.00					
2128	2½"	65	18	1720.00					
2129	3"	80	17	2291.00					
2130	4"	100	16	3256.00					
8363(S)	1¼"	32	25	932.00					
5572(W/L)	2½"	65	18	1720.00					
5574(W/L)	2"	50	19	1167.00					
10917(W/L)	4"	100	16	3600.00					



Item Code	Size (inch)	Size (mm)	Silver		Item Code	Size (inch)	Size (mm)	Silver	
			kg/cm	Rate/pc. (₹) (3mtr)				kg/cm	Rate/pc. (₹) (3mtr)
<b>Column Pipes</b>					<b>Column Pipes</b>				
2165	1"	25	21	570.00	2173	1"	25	21	507.00
2167	1¼"	32	21	664.00	2176	1¼"	32	21	592.00
2166	1½"	40	19	769.00	2174	1½"	40	19	670.00





				S-15						S-15	
			kg/cm	Rate/pc. (₹) (3mtr)					kg/cm	Rate/pc. (₹) (3mtr)	
Item Code	Size (inch)	Size (mm)		With Socket		Item Code	Size (inch)	Size (mm)		Without Socket	
<b>Column Pipes</b>											
2551	1"	25	12.5	453.00		2550	1"	25	12.5	389.00	
10002	1¼"	32	12.5	597.00		10003	1¼"	32	12.5	525.00	



				S-12.5						S-12.5	
			kg/cm	Rate/pc. (₹) (3mtr)					kg/cm	Rate/pc. (₹) (3mtr)	
Item Code	Size (inch)	Size (mm)		With Socket		Item Code	Size (inch)	Size (mm)		Without Socket	
<b>Column Pipes</b>											
2561	1"	25	12.5	380.00		2560	1"	25	12.5	326.00	
2553	1¼"	32	12.5	525.00		2552	1¼"	32	12.5	453.00	



				S-10						S-11	
			kg/cm	Rate/pc. (₹) (3mtr)					kg/cm	Rate/pc. (₹) (3mtr)	
Item Code	Size (inch)	Size (mm)		With Socket		Item Code	Size (inch)	Size (mm)		Without Socket	
<b>Column Pipes</b>											
4093	4"	100	12.5	2887.00		10728	3"	80	12.5	1830.00	



				V4						V4	
			kg/cm	Rate/pc. (₹) (3mtr)					kg/cm	Rate/pc. (₹) (3mtr)	
Item Code	Size (inch)	Size (mm)		With Socket		Item Code	Size (inch)	Size (mm)		Without Socket	
<b>Column Pipes</b>						<b>Column Pipes</b>					
5568	1"	25	12.5	337.00		10004	1"	25	12.5	317.00	
5476	1¼"	32	12.5	471.00							
5475	1½"	40	12.5	688.00							
5474	2"	50	12.5	1032.00							
5473	2½"	65	10	1303.00							
5472	3"	80	12.5	1611.00							

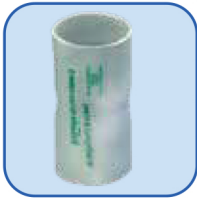
**Terms & Conditions**

- Above prices are ex-works • GST as applicable • Prices, discounts & terms and conditions are subject to change without any prior notice • Price prevailing at the time of dispatch will be applicable • Please refer to our technical catalogue before placing order for any technical query • All disputes are subject to Kolkata court jurisdiction only





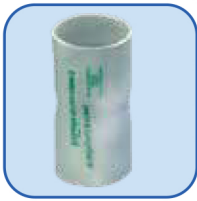
Size (inches)	Size (mm)	QTY	Mode of Packing
<b>Packaging Details</b>			
1"	25	25	Woven Bag
1¼"	32	25	Woven Bag
1½"	40	25	Woven Bag
2"	50	10	Woven Bag
2½"	65	5	Woven Bag
3"	80	5	Woven Bag
4"	100	4	Woven Bag



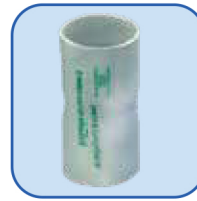
item Code	Size (inch)	Size (mm)	Rate/no Class-1
<b>Socket Coupler IS 10124</b>			
0383	3½"	90	38.00
0386	4"	110	62.00
0389	5"	125	94.00
0392	5½"	140	113.00
0395	6"	160	160.00
0398	6½"	180	203.00
0401	8"	200	268.00
2327	10"	250	611.00
0407	12"	315	886.00



item Code	Size (inch)	Size (mm)	Rate/no Class-2
<b>Socket Coupler IS 10124</b>			
0379	2½"	63	24.00
0381	3"	75	36.00
0384	3½"	90	55.00
0387	4"	110	89.00
0390	5"	125	129.00
0393	5½"	140	173.00
0396	6"	160	243.00
0399	6½"	180	315.00
0402	8"	200	411.00
2803	11"	280	938.00
0408	12"	315	1393.00

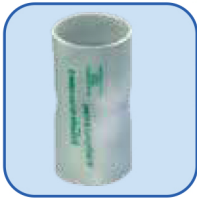


item Code	Size (inch)	Size (mm)	Rate/no Class-3
<b>Socket Coupler IS 10124</b>			
0377	1½"	40	13.00
0378	2"	50	18.00
0380	2½"	63	32.00
0382	3"	75	49.00
0385	3½"	90	75.00
0388	4"	110	123.00
0391	5"	125	185.00
0394	5½"	140	245.00
0397	6"	160	344.00
0400	6½"	180	447.00
0403	8"	200	593.00
0406	9"	225	756.00
1301	10"	250	949.00
2613	11"	280	1275.00
0409	12"	315	2045.00



item Code	Size (inch)	Size (mm)	Rate/no Class-4
<b>Socket Coupler IS 10124</b>			
3162	3"	75	55.00
1199	4"	110	147.00
3163	5½"	140	353.00
3164	6"	160	478.00
3165	6½"	180	598.00
0404	8"	200	763.00
2798	12"	315	2645.00





Item Code	Size (inch)	Size (mm)	Rate/no Class-5
<b>Socket Coupler IS 10124</b>			
2326	2"	50	26.00
1200	4"	110	185.00
0405	8"	200	926.00
2799	12"	315	3158.00



Item Code	Size (inches)	Size (mm)	MTA
<b>Male Thread Adapter (MTA) / Female Thread Adapter (FTA)</b>			
0471	1½"	50	43.00
0473	2"	63	60.00
0475	3"	90	131.00
0477	4"	110	190.00
1440	5"	140	307.00
1451	8"	200	384.00



Item Code	Size (inches)	Size (mm)	FTA
<b>Male Thread Adapter (MTA) / Female Thread Adapter (FTA)</b>			
0472	1½"	50	47.00
0474	2"	63	65.00
0476	3"	90	140.00
0478	4"	110	198.00
2332	5"	140	312.00

